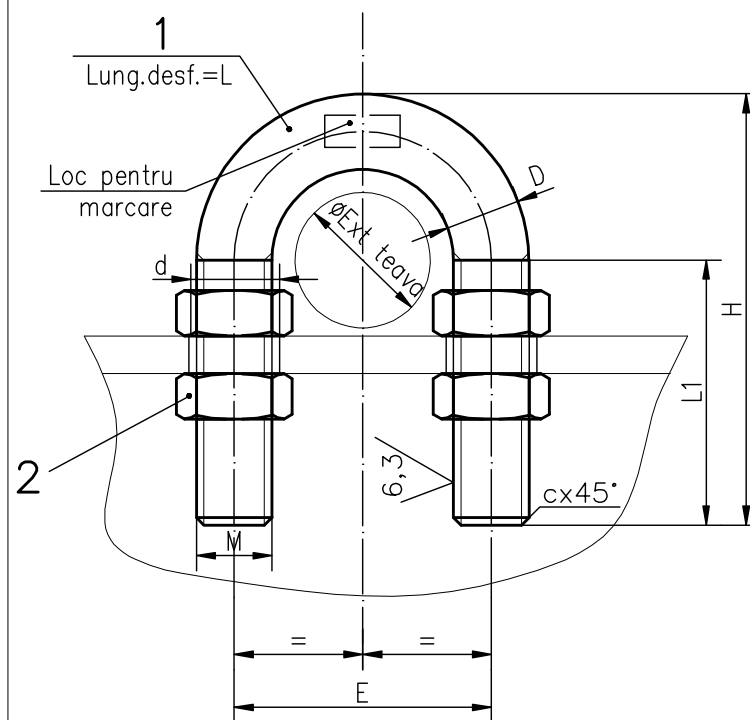


BRATARA SIMBOL BG

TOATE DIMENSIUNILE IN MM, TOATE MASELE IN KG



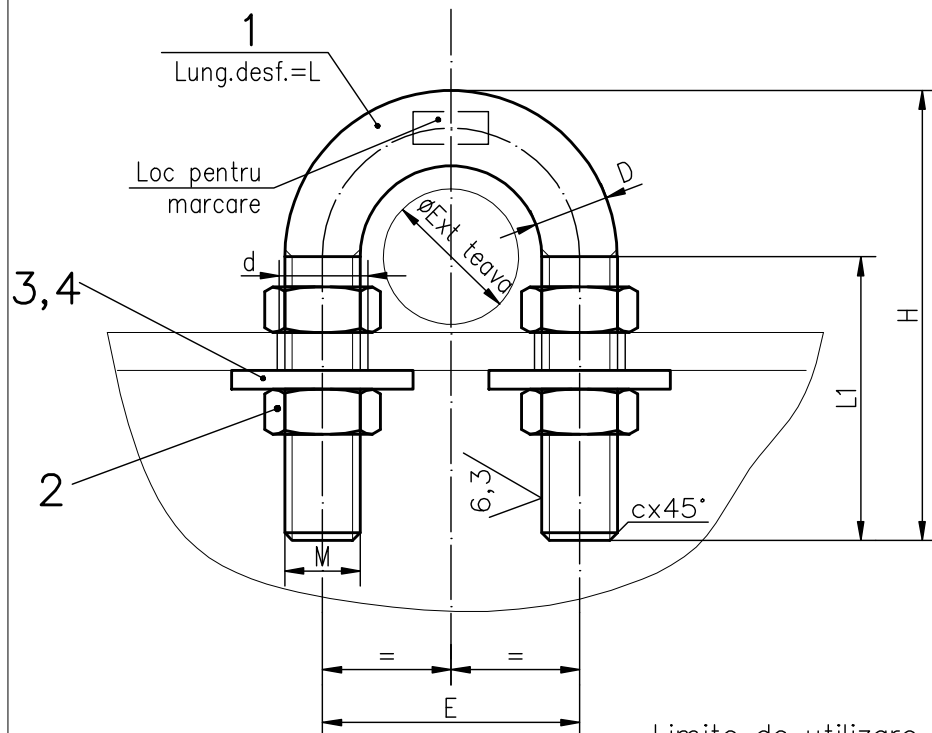
| Dn condi. | ø ext. teava | POZ.1 | | | | | | | | POZ.2 | | POZ.3 | | POZ.4 | | VARIANTE DE EXECUTIE | | | | | |
|-----------|--------------|-------|----------|-----|-----|------|----|-----|-------|---------|-------|---------|-------|---------|-------|----------------------|-------------|---------|-------------|---------|-------------|
| | | D | M | E | H | L | L1 | C | MASA | DIMENS. | MASA | DIMENS. | MASA | DIMENS. | MASA | MARCA | MASA TOTALA | MARCA | MASA TOTALA | MARCA | MASA TOTALA |
| 1/2" | 22 | 12 | M10x1,25 | 36 | 65 | 139 | 42 | 1,5 | 0,124 | M10 | 0,044 | U10 | 0,017 | I10 | 0,018 | BG-15 | 0,168 | BGU-15 | 0,185 | BGI-15 | 0,186 |
| 3/4" | 28 | 12 | M10x1,25 | 42 | 70 | 152 | 42 | 1,5 | 0,135 | M10 | 0,044 | U10 | 0,017 | I10 | 0,018 | BG-20 | 0,179 | BGU-20 | 0,196 | BGI-20 | 0,197 |
| 1" | 34 | 12 | M10x1,25 | 50 | 80 | 177 | 48 | 1,5 | 0,158 | M10 | 0,044 | U10 | 0,017 | I10 | 0,018 | BG-25 | 0,202 | BGU-25 | 0,219 | BGI-25 | 0,230 |
| 1 1/4" | 42 | 12 | M10x1,25 | 58 | 90 | 201 | 48 | 1,5 | 0,179 | M10 | 0,044 | U10 | 0,017 | I10 | 0,018 | BG-32 | 0,223 | BGU-32 | 0,240 | BGI-32 | 0,241 |
| 1 1/2" | 48 | 12 | M10x1,25 | 64 | 95 | 215 | 48 | 1,5 | 0,191 | M10 | 0,044 | U10 | 0,017 | I10 | 0,018 | BG-40 | 0,235 | BGU-40 | 0,252 | BGI-40 | 0,253 |
| 2" | 60 | 14 | M12x1,25 | 78 | 105 | 241 | 50 | 1,5 | 0,291 | M12 | 0,060 | U12 | 0,042 | I12 | 0,048 | BG-50 | 0,351 | BGU-50 | 0,393 | BGI-50 | 0,399 |
| 2 1/2" | 73 | 14 | M12x1,25 | 92 | 122 | 283 | 50 | 1,5 | 0,342 | M12 | 0,060 | U12 | 0,042 | I12 | 0,048 | BG-65 | 0,402 | BGU-65 | 0,444 | BGI-65 | 0,450 |
| 3" | 89 | 14 | M12x1,25 | 108 | 135 | 318 | 50 | 1,5 | 0,384 | M12 | 0,060 | U12 | 0,042 | I12 | 0,048 | BG-80 | 0,444 | BGU-80 | 0,486 | BGI-80 | 0,492 |
| 4" | 114 | 18 | M16x1,5 | 138 | 180 | 421 | 65 | 2 | 0,841 | M16 | 0,123 | U16 | 0,071 | I16 | 0,081 | BG-100 | 0,964 | BGU-100 | 1,035 | BGI-100 | 1,045 |
| 5" | 140 | 18 | M16x1,5 | 164 | 206 | 488 | 65 | 2 | 0,975 | M16 | 0,123 | U16 | 0,071 | I16 | 0,081 | BG-125 | 1,098 | BGU-125 | 1,169 | BGI-125 | 1,179 |
| 6" | 168 | 18 | M16x1,5 | 192 | 230 | 552 | 65 | 2 | 1,103 | M16 | 0,123 | U16 | 0,071 | I16 | 0,081 | BG-150 | 1,226 | BGU-150 | 1,297 | BGI-150 | 1,307 |
| 8" | 219 | 18 | M16x1,5 | 244 | 285 | 692 | 65 | 2 | 1,383 | M16 | 0,123 | U16 | 0,071 | I16 | 0,081 | BG-200 | 1,506 | BGU-200 | 1,577 | BGI-200 | 1,587 |
| 10" | 273 | 22 | M20x1,5 | 302 | 350 | 851 | 85 | 2 | 2,540 | M20 | 0,241 | U20 | 0,123 | I20 | 0,144 | BG-250 | 2,781 | BGU-250 | 2,904 | BGI-250 | 2,925 |
| 12" | 324 | 22 | M20x1,5 | 354 | 400 | 981 | 85 | 2 | 2,927 | M20 | 0,241 | U20 | 0,123 | I20 | 0,144 | BG-300 | 3,168 | BGU-300 | 3,291 | BGI-300 | 3,312 |
| 14" | 356 | 22 | M20x1,5 | 386 | 430 | 1059 | 85 | 2 | 3,160 | M20 | 0,241 | U20 | 0,123 | I20 | 0,144 | BG-350 | 3,401 | BGU-350 | 3,524 | BGI-350 | 3,545 |
| 16" | 406 | 26 | M24x2 | 440 | 495 | 1216 | 95 | 3 | 5,068 | M24 | 0,444 | U24 | 0,248 | I24 | 0,276 | BG-400 | 5,512 | BGU-400 | 5,760 | BGI-400 | 5,788 |
| 18" | 457 | 26 | M24x2 | 492 | 545 | 1346 | 95 | 3 | 5,610 | M24 | 0,444 | U24 | 0,248 | I24 | 0,276 | BG-450 | 6,054 | BGU-450 | 6,302 | BGI-450 | 6,330 |
| 20" | 508 | 26 | M24x2 | 542 | 600 | 1484 | 95 | 3 | 6,185 | M24 | 0,444 | U24 | 0,248 | I24 | 0,276 | BG-500 | 6,629 | BGU-500 | 6,877 | BGI-500 | 6,905 |
| 24" | 609 | 26 | M24x2 | 644 | 700 | 1743 | 95 | 3 | 7,265 | M24 | 0,444 | U24 | 0,248 | I24 | 0,276 | BG-600 | 7,709 | BGU-600 | 7,957 | BGI-600 | 7,985 |

| DIMENSIUNI FILET M | M10 | M12 | M16 | M20 | M24 |
|--------------------|-----|-----|-----|-----|-----|
| DIAM. GAURA d | 12 | 14 | 18 | 23 | 27 |

NOTA

1. Numarul si tipurile de suporturi trebuie sa corespunda specificatiilor de suporturi pentru conducte.
2. Executia in uzina trebuie sa corespunda specificatiilor.
3. Variantele de montaj trebuie sa corespunda proiectelor de conducte.
4. Toate gaurile care trebuie date in aripile profilelor (corniere, profile U sau I), in care se fixeaza bratarile, se vor executa prin aschiere.
5. Marcare conform tabel.

BRATARA SIMBOL BGU SI BGI



Limite de utilizare pentru conducte de 2" si mai mari:
bratarile "U" din acest desen nu vor fi utilizate pentru
incarcari laterale peste 200kgf.

REFOLOSIT LA PROIECT NR.: A586

| | | | | | | | | |
|-------------------------------------|------------|-------------------|---------------------|--|---------|----------|------------|------------------------|
| Bratara "U" BGI | 4 | SAIBA "I" | SR EN ISO 7089:2002 | 2 | S235 JR | - | | |
| | 2 | PIULITA "SP" | SR EN ISO 4032-2013 | 4 | gr.5 | - | | |
| | 1 | BRATARA "U" | - | 1 | S235 JR | - | | |
| Bratara "U" BGU | 3 | SAIBA "U" | SR EN ISO 7089:2002 | 2 | S235J R | - | | |
| | 2 | PIULITA "SP" | SR EN ISO 4032-2013 | 4 | gr.5 | - | | |
| | 1 | BRATARA "U" | - | 1 | S235 JR | - | | |
| Bratara "U" BG | 2 | PIULITA "SP" | SR EN ISO 4032-2013 | 4 | gr.5 | - | | |
| | 1 | BRATARA "U" | - | 1 | S235 JR | - | | |
| mari: entru | Poz. | Denumirea | Nr.desen sau STAS | | Buc. | Material | Observatii | Masa neta kg/buc |
| | | | | | | | | |
| | | | | | | | | |
| | | | | | | | | |
| | | | | | | | | |
| | Proiectat | ing.Bercea M. | | | R-043 | | | Rev.: 1 |
| | Desenat | ing.Constantin A. | | | | | | |
| | Verificat | ing.Constantin A. | | | | | | |
| | Contr.STAS | Herascu E. | | | | | | |
| | Aprobat | ing.IonescuA. | Masa neta: | Inlocuieste desen nr.: | | | | |
| S.C.Ellis'92 S.R.L. Ploiesti | | | | BRATARI "U" DE GHIDARE PENTRU CONDUCTE 1/2" ... 24" | | | | |
| | | Data: 10.2014 | | Ob: | | | | |